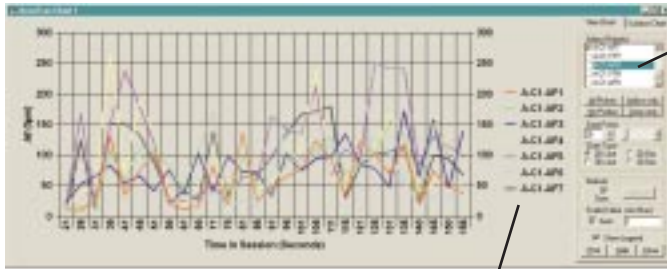


AccuTrac Software Rev 4.0

Developed by Cambridge AccuSense for use with the ATM-24, TCM-24, FVA Series and Quattro Flow Velocity Analyzers.

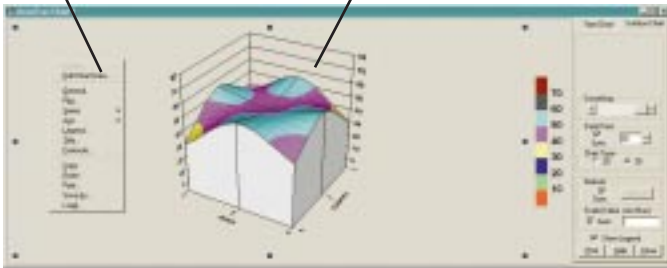


Legend shows each probe in a different color

Click on probe numbers you wish to see plotted. Click again to de-select

Click with the right mouse button anywhere in the chart to see the floating menu

Choose contour plot to analyze laminar flow patterns.



Com Port numbers and Airflow or Temperature (Probe) numbers are always displayed here

Click to select statistical choice

Double-click on the right mouse button to access spreadsheet program

Check the Track Data box to keep incoming data in view

The Windows™-based AccuTrac Software package from Cambridge AccuSense turns your PC into a powerful test and analysis center. Airflow, temperature and surface temperature data acquired by any Cambridge AccuSense instrument can now be displayed, saved, reviewed, graphed and printed without having to export the information to another program.

The user-friendly AccuTrac increases measurement versatility, reduces testing time and improves testing flexibility. AccuTrac allows you to connect up to four instruments. However, users can choose whether all data are to be viewed and graphed real-time, or saved and reviewed later. Increased flexibility is also achieved by viewing any number of samples. Files are saved in Excel spreadsheet format for use with other programs.

The latest AccuTrac version communicates directly with the ATM-24, TCM-24, FVA & Quattro Flow to automatically set up sampling times and measurement units, eliminating the need to set parameters in another terminal program. System requirements are Pentium 166 processor, 24 MB of RAM, 15MB of free disk space and CD ROM to install.

KEY FEATURES

- All-in-one package — no need to export data to other programs. Print graphs at any time during the test, or cut and paste into other programs. Full spreadsheet and graphing program included.
- Real-time graphing— analyze information as measurements are being taken.
- Wide analytical range — statistical options include average, min/max, and standard deviation and root mean square.
- Power — access multiple graphs simultaneously, go back to saved files as needed to view other probes or to re-examine test data.
- Data protection — immune to power interruptions, logged data is automatically saved as measurements are being taken.
- Versatility — Automated or manually-set axis control, data viewing and sensor labelling.
- Efficiency — graph all the various statistical measurements.
- User-friendly — Simply click on a probe to automatically graph its data.

For more extensive technical information on this software or other AccuSense products including the ATM-24, TCM-24, FVA and the Quattro Flow, please call our sales department.



CAMBRIDGE ACCUSENSE, INC.

1000 Mount Laurel Circle
Shirley, Massachusetts 01464
Tel: 978-425-2090 Fax: 978-425-4062
<http://www.accusense.com>